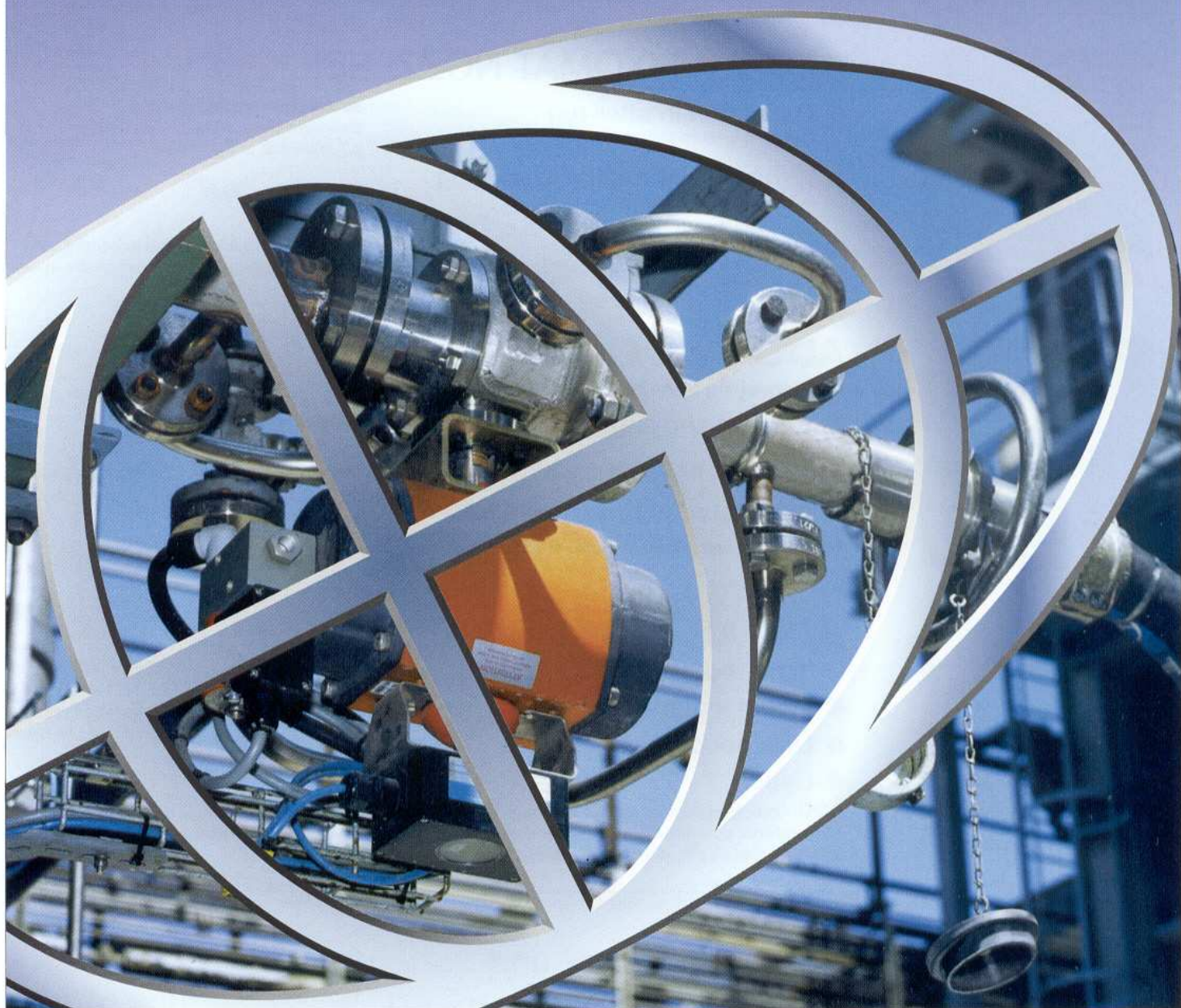
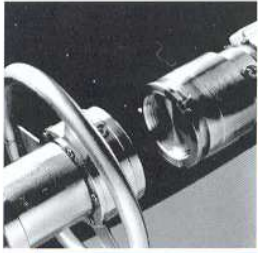


# ARTA

## Innovations

**for speedy,  
environmentally-friendly  
fuelling**





### ASK-FULL HOSE DRY COUPLING

For

- Organic and non-organic chemicals
- Gases
- Refining

This permits the fast and environmentally safe connection and disconnection of hoses and pipelines that are filled/ under operating pressure, without having to empty the hose. Installation in suction and perssure lines on tanker vehicles, tank containers and hose coupling stations.

Sizes:	Approvals:	Pressure levels
DN 15 to DN 150	TÜV, WHG, BZA	PN 16 to PN 40

The material specification in accordance with areas of application and media in question.



### NTS-EMERGENCY-SAFETY-DISCONNECTOR

The EMERGENCY-SAFETY-DISCONNECTOR is used to disconnect pipes, hoses and loading arms during loading and fuelling procedures. Faults can occur if the tanker vehicle, tank wagon or ship draw away unintentionally.

Pressure levels:	PN 10, 16, 40
Sizes::	DN 25 to DN 250
Connection:	As per DIN
Variations:	NTS-SZ with cable control for any traction NTS-PÜ for overpressure and purely axial traction
Approval:	TÜV, WHG

The material specification in accordance with areas of application and media in question.



### AZV/ZV-FIXOMAT NOZZLES

- Reduction in after-run thanks to an even closing process
- Automatic or manual switching with precise control system
- Optimum filling level thanks to low foaming characteristics

Secure closure with pressure and correct shutdown under varying loads between 0.7 and 3 bar or 3 and 6 bar.

Sizes: DN 5 to DN 50

The material specification in accordance with areas of application and media in question.



### ADG-SWIVEL JOINTS

For conveying free- flowing media

- Straight and angled joints
- 14 basic designs
- Articulated pipe system GRS

Sizes:	DN 12 to DN 150
Pressure levels:	PN 10, 16, 25

Areas of use: General conveying technology  
Special designs available on request.

The material specification in accordance with areas of application and media in question.



### ACK-ARTA-COMBINATION COUPLING

For conveying

- Liquid materials
- Bulk goods
- Gases

The ARTA combined coupling offers the user maximum freedom. The combination of the ADC quick action coupling with the patent ball valve enables the coupling to be used both as an open system with free passage and as a self- sealing coupling.

**ADC - quick-action coupling- can be used on an individual basis**  
The material specification in accordance with areas of application and media in question.

Sizes:	DN 25, 32, 38, 50
Pressure level:	PN 16

# ARTA

Innovations in stainless steel





## AZV - FIXOMAT<sup>®</sup> AUTOMATIC FILLING NOZZLE

### Chemical Media



Materials: Stainless Steel 1.4571  
PTFE seals

### Solvents + fuels



Materials: Aluminium  
Stainless Steel  
PTFE seals

- The filling nozzle closes automatically when the given filling level is reached.
- Secure shutdown with the pressure even under variable load from 0.7 to 6.0 bar.
- Secure function thanks to precise control systems.
- Optimum filling level thanks to low foaming

Technical data	DN 20/25 G 1" AG	DN 32 G 1 1/2" AG	DN 50 G 2" AG
Flow performance	70 l/min	200 l/min	400 l/min
Operating pressure B1	0.7 - 3 bar	0.7 - 3 bar	0.7 - 6 bar
B2	3 - 6 bar	3 - 6 bar	
Nominal pressure	10 bar	10 bar	10 bar
Weight	1.8 kg	2.25 - 2.6 kg	2.8 - 3kg
Total length	390 mm	465 mm	400 mm
Drop tube diameter	28 mm	40 mm	60 mm
Drop tube length	165 mm	200 mm	275 mm
Swivel joint ADG	available	available	integrated

Please specify the following points regarding operating conditions !

### Conditions:

Choice of variants: Gas recycling systems and drop tube types

- Operating pressure: _____ bar
- Viscosity: _____ mPas ( max. 35 mPas )
- Temperature: _____ °C ( max. + 70°C )

Gas recycling systems		Drop tube types			Operating pressure	
		A1	A2	A3	3 bar	6 bar
Conical seal plug	G1					
Bellows	G2					
Gas recycling threaded with barrel connection	G3					
Quick action gas recycling connector	G4					
Ambient suction gas bell	G5					
No gas recycling system	G0					

### Options:

- Proximity switch for activating pump
- Non-standard connectors and drop tubes available on request
- Swivel joints ADG to match all specified nominal diameters
- Acid-proof version for **ZV filling nozzles** with deadman switch available

Die Angaben entsprechen dem derzeitigen Stand der Entwicklung.

Änderungen vorbehalten !



Armaturen- und  
Tankgerätee Bau GmbH

Postfach 1248 D-65571 · Diez a. d. Lahn  
Tel. +49 (0) 6432-9147-40  
Fax: +49 (09) 6432-9147-12  
e-mail: info@arta-gmbh.de

## ZV - FIXOMAT® DN 12 MANUALLY CONTROLLED FILLING NOZZLE

### Chemical Media

**C**

Materials: Stainless Steel 1.4571  
PTFE seals

### Solvents + fuels

**L**

Materials: Aluminium / 1.4571  
PTFE seals

### Fuels

**K**

Materials: Aluminium  
Viton seals



Technical data	DN 12
Nominal diameter	12 mm
Flow performance	1-50 l/min
Operating pressure	6 bar
Nominal pressure	10 bar
Connector thread	G 3/4" IG
Weight	0,5 kg
Total length	250 mm
Drop tube diameter	18 mm
Drop tube length	150 mm
Bracket	On request

### The handy nozzle

for filling and emptying

- small containers
- motors

for:

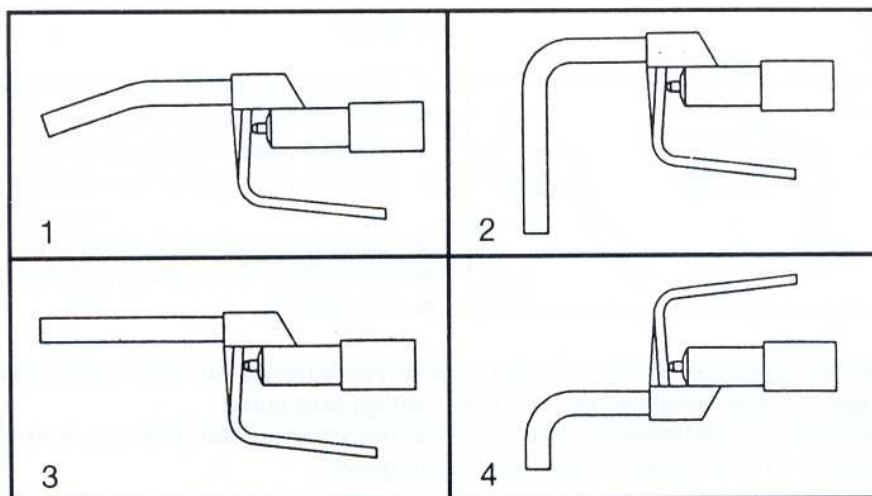
- Taking samples
- Additive mixing
- Laboratory applications

Options:

- Drop tube can be executed as required
- Media can be dosed in fine quantities

The fuel version is supplied with an non-drip mouthpiece.

### Choice of variants



Note: The versions shown can be installed both vertically and horizontally

Note: All specifications according to the momentary stage of development.

## ZV - FIXOMAT® MANUALLY CONTROLLED FILLING NOZZLE

### Chemical media

**C**

Materials: Stainless Steel 1.4571  
PTFE seals

### Solvents

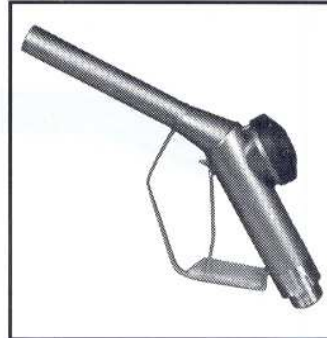
**L**

Materials: Aluminium  
PTFE seals

### Corrosive media

**C/S**

Materials: Stainless Steel 1.4571  
with PTFE-Inline  
PTFE seals



ZV- DN 20/25,32



ZV - DN 50

The versatile nozzle  
for filling  
canisters and drums.

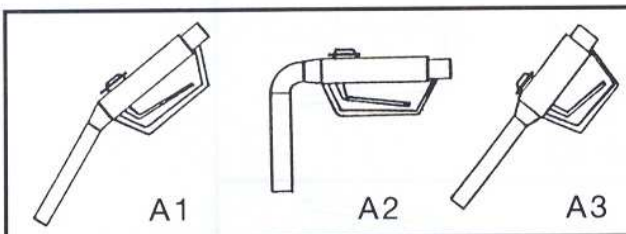
The high performance  
nozzle for use on  
Containers and large drums.

Technical data	DN 20/25 G 1" AG	DN 32 G1½" AG	DN 50 G2" AG
Flow performance	90 l/min	200 l/min	400 l/min
Operating pressure B1	0-3 bar	0-6 bar	0-6 bar
B2	0-6 bar		
Nominal pressure	10 bar	10 bar	10 bar
Weight	1,5 kg	2.6 kg	3 kg
Total length	415 mm	465 mm	400 mm
Drop tube diameter	22/28 mm	40 mm	60 mm
Drop tube length	190 mm	200 mm	275 mm
Swivel joint ADG	available	available	Integrated

Note: in the case of all C/S models, technical data varies slightly from that shown in the table.

### Choice of variants

#### Types of drop tube



#### Options:

- Different lengths of drop tube available on request
- Lugs for fastening the retract mechanism
- Spray protector for covering fuel tank opening
- Threaded connector for: - flexible outlet  
- universal pipe interchange
- Swivel joint as flexible feed line
- Protective PE cap for drop tube
- Finedosing

- The tried and tested deadman switch system guarantees safety while filling the tank
- Flow pressure guarantees secure closure under varying pressures
- Gas recycling systems in association with pre-selected volume (see AZV brochure)
- User-friendly thanks to one-handed operation using glove

Note: All specifications according to the momentary stage of development.

# ARTA®

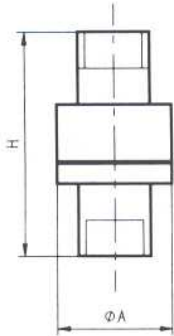
Innovations in stainless steel



Technical data

## Straight version

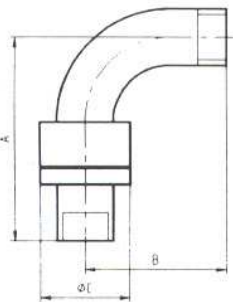
lengths



Size Thread Materials Dimensions Thread-

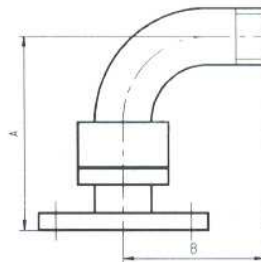
DN	G Inch	MS/ Viton	1.4571/ PFE	Ø A mm	H mm	IG mm	AG mm
12	1/2	■	■	34	53	14	14
18/19	3/4	■	■	40	53	14	14
20/25	1	■	■	45	53	14	14
38	1 1/2	■	■	62	64	17	20
40	1 1/2	■	■	68	92	18	20
50	2	■	■	80	94	20	22
65	2 1/2		■	95	94	20	22
80	3		■	110	105	22	24
100	4		■	125	105	22	24

## 90° angle version



Size Thread Dimensions

DN	G Inch	A mm	B mm	Ø C mm
20/25	1	80	62	45
40	1 1/2	140	80	68
50	2	167	105	80
80	3	213	145	110
100	4	240	174	125

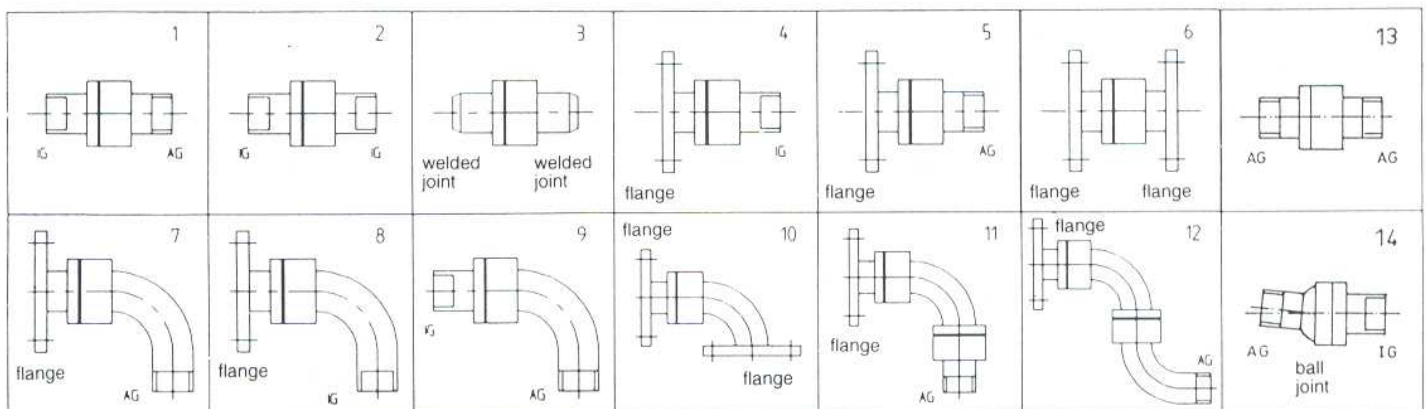


Size Dimensions

DN	A mm	B mm
20/25	80	62
40	140	80
50	167	105
80	213	145
100	240	174

Materials: 1.4571 / PFE seals

## Basic versions



Pressure levels: PN 10 / 16 and vacuum area Nominal widths > DN 100 available on request

Note: All specifications according to the momentary stage of development.