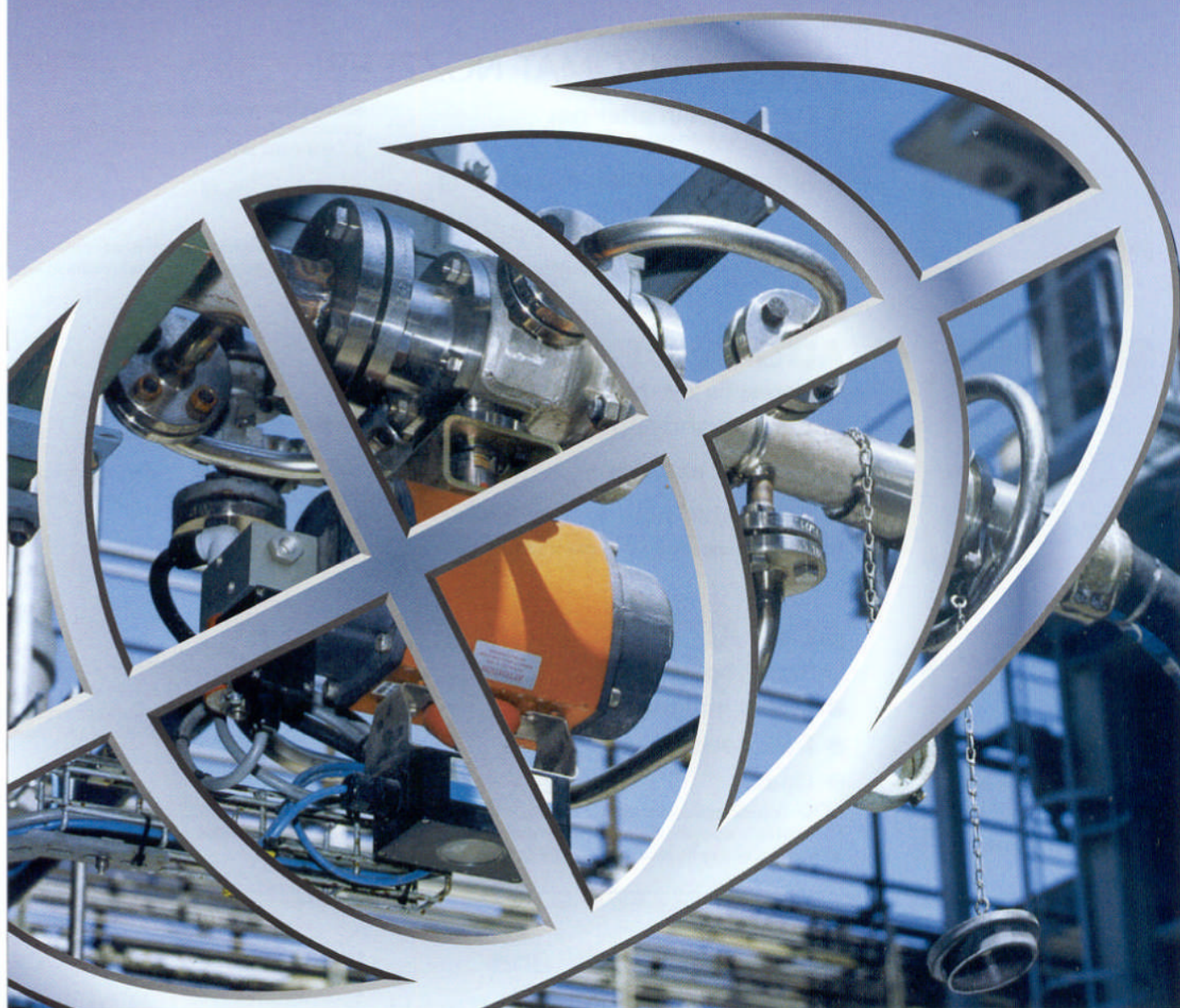


# ARTA®

## Innovations

**for speedy,  
environmentally-friendly  
fuelling**







Innovations in stainless steel



## ASK-FULL HOSE DRY COUPLING

For

- Organic and non-organic chemicals
- Gases
- Refining

This permits the fast and environmentally safe connection and disconnection of hoses and pipelines that are filled/ under operating pressure, without having to empty the hose. Installation in suction and pressure lines on tanker vehicles, tank containers and hose coupling stations.

Sizes:  
DN 15 to DN 150

Approvals:  
TÜV, WHG, BZA

Pressure levels  
PN 16 to PN 40

The material specification in accordance with areas of application and media in question.



## NTS-EMERGENCY-SAFETY-DISCONNECTOR

The EMERGENCY-SAFETY-DISCONNECTOR is used to disconnect pipes, hoses and loading arms during loading and fuelling procedures. Faults can occur if the tanker vehicle, tank wagon or ship draw away unintentionally.

Pressure levels: PN 10, 16, 40  
 Sizes: DN 25 to DN 250  
 Connection: As per DIN  
 Variations: NTS-SZ with cable control for any traction  
 NTS-PÜ for overpressure and purely axial traction  
 Approval: TÜV, WHG

The material specification in accordance with areas of application and media in question.



## AZV/ZV-FIXOMAT NOZZLES

- Reduction in after-run thanks to an even closing process
- Automatic or manual switching with precise control system
- Optimum filling level thanks to low foaming characteristics

Secure closure with pressure and correct shutdown under varying loads between 0.7 and 3 bar or 3 and 6 bar.

Sizes: DN 5 to DN 50

The material specification in accordance with areas of application and media in question.



## ADG-SWIVEL JOINTS

For conveying free-flowing media

- Straight and angled joints
- 14 basic designs
- Articulated pipe system GRS

Sizes: DN 12 to DN 150  
 Pressure levels: PN 10, 16, 25

Areas of use: General conveying technology  
 Special designs available on request.

The material specification in accordance with areas of application and media in question.



## ACK-ARTA-COMBINATION COUPLING

For conveying

- Liquid materials
- Bulk goods
- Gases

The ARTA combined coupling offers the user maximum freedom. The combination of the ADC quick action coupling with the patent ball valve enables the coupling to be used both as an open system with free passage and as a self-sealing coupling.

ADC - quick-action coupling - can be used on an individual basis  
 The material specification in accordance with areas of application and media in question.

Sizes: DN 25, 32, 38, 50  
 Pressure level: PN 16

Note: The illustrations reproduced above may differ from the original. Specifications correspond to the current state of development.

Subject to change.



Armaturen- und  
Tankgerätee Bau GmbH & Co.KG

Postfach 1248 · D-65571 Diez a. d. Lahn · Germany  
 Tel.: 0049 - (0) 6432 / 914740 Internet: www.arta-gmbh.de  
 Fax: 0049 - (0) 6432 / 914712 e-mail: info@arta-gmbh.de



NTS<sup>®</sup> -Emergency Safety  
Disconnect

chemicals

**ARTA** 

Innovations in stainless steel





# NTS® - Emergency Safety Disconnecter with cable control



Sample application

## 1. Area of applications

The emergency safety separator with cable control (NTS-SZ) serves to disconnect pipe and hose lines conveying liquid and gaseous media. The **NTS-SZ** is suitable for integration into loading booms. Application cases can, for example, be the premature departure of a tanker or a tank wagon or the drift of a tanker during loading and unloading stages.

## 2. Layout of the NTS-SZ

Two nonreturn valves prevent the loss of product in the event of emergency disconnection. The two housing shells are joined by segments via a tensioning ring. The cable is disconnected by means of levers via cable control with automatic or external activation.

## 3. Function

If the line system is subjected to an unpermitted load, the levers are swung out by cable control, the tensioning ring is displaced, and the retaining segments are released. Then the two housing halves separate. The spring-loaded valves automatically close the line ends.

## 4. Technical specifications

Model sizes:

DN 25 – 250 mm

Material / seals:

1.4571 / PFE for chemical media

1.4571 with PTFE inner parts / PFE  
for acids and alkalis

1.4301 / Viton for solvents and fuels

Pressure stage:

PN 16 bar for DN100 / 150 / 200 / 250 mm

PN 25 bar for DN 25 / 50 / 80

PN 40 bar for DN 25 / 50 / 80

Connections:

G 1" – G 4" inside thread

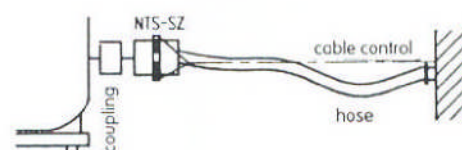
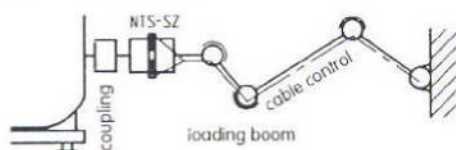
Flange DN 25 – DN 250 mm

Permits:

TÜV, WHG § 19

Other material specifications and connections  
on request.

## Examples of installations



The data reflects the current status of development.

Subject to change.

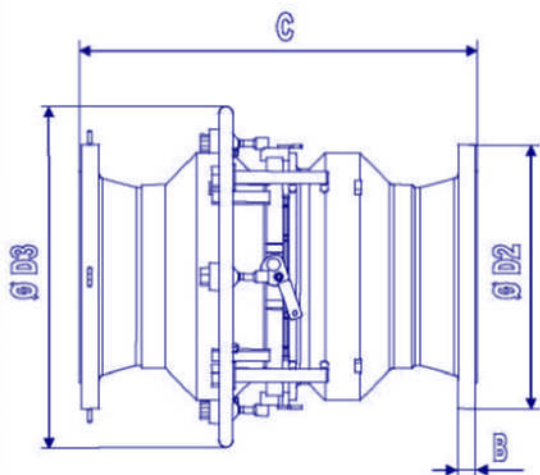
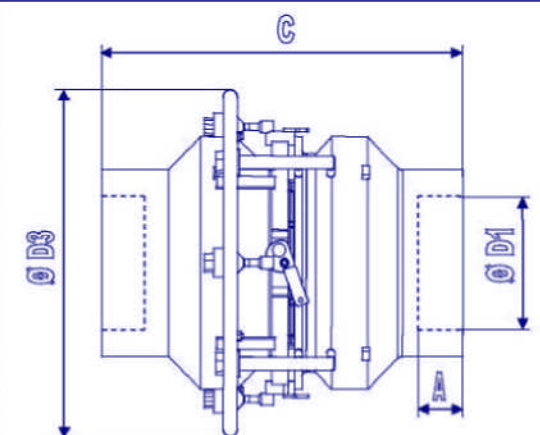


Armaturen- und  
Tankgerätebau GmbH & Co.KG

Postfach 1248 · D-65571 Diez a. d. Lahn · Germany  
Tel.: 0049 - (0) 6432 / 914740 Internet: [www.arta-gmbh.de](http://www.arta-gmbh.de)  
Fax: 0049 - (0) 6432 / 914712 e-mail: [info@arta-gmbh.de](mailto:info@arta-gmbh.de)



Type	Connection	PN (bar)	Ø D1 (mm)	Ø D2 (mm)	A (mm)	B (mm)	C (mm)	Ø D3 (mm)	Weight (kg)
NTS - SZ - DN 25	female thread	25	G 1"	-	14	-	123	123	2
	flange DN 25	25	-	115	-	18	130	-	3
NTS - SZ - DN 50	female thread	25	G 2"	-	19	-	150	240	5,5
	flange DN 50	25	-	165	-	20	170	-	11
NTS - SZ - DN 80	female thread	25	G 3"	-	22	-	196	280	8
	flange DN 80	25	-	200	-	24	222	-	17
NTS - SZ - DN 100	female thread	16	G 4"	-	22	-	244	280	11
	flange DN 100	16	-	220	-	20	238	-	20,4
NTS - SZ - DN 150	flange DN 150	16	-	285	-	22	350	420	41
NTS - SZ - DN 200	flange DN 200	16	-	340	-	24	492	524	70
NTS - SZ - DN 250	flange DN 250	16	-	405	-	26	564	524	110
NTS - SZ - DN 300	flange DN 300	16	-	460	-	28	700	584	170
Emergency separation device with cable control for technical and liquid gases									
NTS - SZ - DN 25	female thread	40	G 1"	-	20	-	132	123	2,2
	flange DN 25	40	-	115	-	18	130	-	3
NTS - SZ - DN 50	female thread	40	G 2"	-	30	-	172	240	5,8
	flange DN 50	40	-	165	-	20	170	-	11
NTS - SZ - DN 80	female thread	40	G 3"	-	33	-	218	280	8,4
	flange DN 80	40	-	200	-	24	222	-	17



Standard types with BSP female thread acc. ISO 228 or with DIN flange. Other types i.e. male thread or NPT thread on request.

**Subject to change!**

layout: M. Heublein	date: 06.01.2004	version: 6.0	modified: 5.1 ; 13.02.2003
------------------------	---------------------	-----------------	-------------------------------