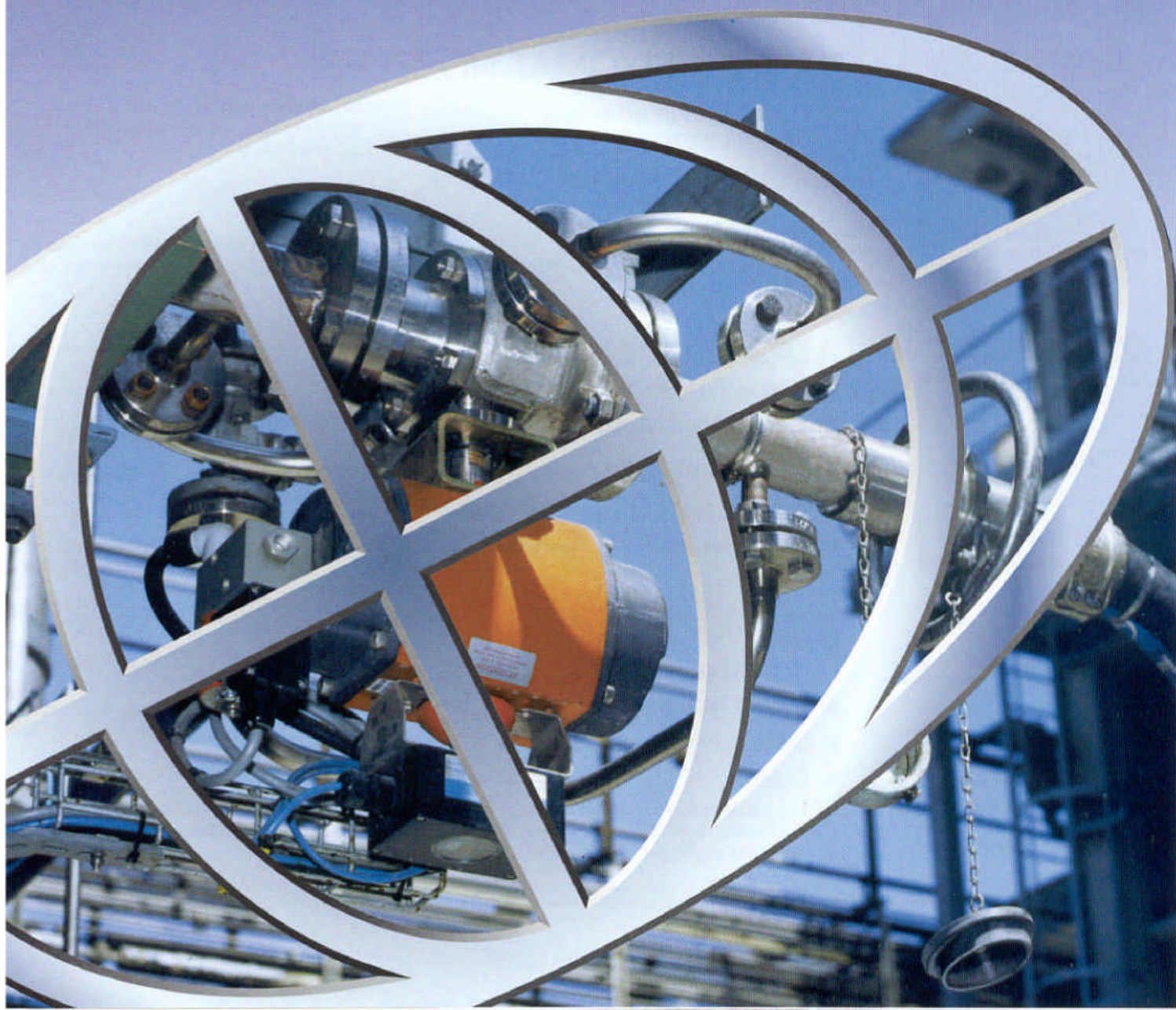


ARTA®

Innovations

**for speedy,
environmentally-friendly
fuelling**





ASK-FULL HOSE DRY COUPLING

For

- Organic and non-organic chemicals
- Gases
- Refining

This permits the fast and environmentally safe connection and disconnection of hoses and pipelines that are filled/ under operating pressure, without having to empty the hose. Installation in suction and pressure lines on tanker vehicles, tank containers and hose coupling stations.

Sizes:
DN 15 to DN 150

Approvals:
TÜV, WHG, BZA

Pressure levels
PN 16 to PN 40

The material specification in accordance with areas of application and media in question.



NTS-EMERGENCY-SAFETY-DISCONNECTOR

The EMERGENCY-SAFETY-DISCONNECTOR is used to disconnect pipes, hoses and loading arms during loading and fuelling procedures. Faults can occur if the tanker vehicle, tank wagon or ship draw away unintentionally.

Pressure levels: PN 10, 16, 40
Sizes: DN 25 to DN 250

Connection: As per DIN

Variations: NTS-SZ with cable control for any traction
NTS-PÜ for overpressure and purely axial traction

Approval: TÜV, WHG

The material specification in accordance with areas of application and media in question.



AZV/ZV-FIXOMAT NOZZLES

- Reduction in after-run thanks to an even closing process
- Automatic or manual switching with precise control system
- Optimum filling level thanks to low foaming characteristics

Secure closure with pressure and correct shutdown under varying loads between 0.7 and 3 bar or 3 and 6 bar.

Sizes: DN 5 to DN 50

The material specification in accordance with areas of application and media in question.



ADG-SWIVEL JOINTS

For conveying free-flowing media

- Straight and angled joints
- 14 basic designs
- Articulated pipe system GRS

Sizes: DN 12 to DN 150
Pressure levels: PN 10, 16, 25

Areas of use: General conveying technology
Special designs available on request.

The material specification in accordance with areas of application and media in question.



ACK-ARTA-COMBINATION COUPLING

For conveying

- Liquid materials
- Bulk goods
- Gases

The ARTA combined coupling offers the user maximum freedom. The combination of the ADC quick action coupling with the patent ball valve enables the coupling to be used both as an open system with free passage and as a self-sealing coupling.

ADC - quick-action coupling- can be used on an individual basis

Sizes: DN 25, 32, 38, 50

The material specification in accordance with areas of application and media in question.

Pressure level: PN 16

ASK® - Full Hose Dry Coupling

chemicals

ARTA®



Innovations in stainless steel



ASK® - Full Hose Dry Coupling



Contemporary fittings
for conveying liquid
and gaseous media



Sample application in the German industrial chemicals sector:
Mobile and stationary tanks as well as hose stations

Advantages:

High level of reliability thanks to precision and high-grade materials.
Easy to use thanks to light weight and simple one-handed function.
High level of security for people, system and the environment thanks to freedom from leaks and monitoring by the German Technical Testing Association.

Places of use:

Suction and pressure lines on tanker vehicles, tank containers, pumping stations and hose stations.

Structure and function:

The coupling system consists of two parts: male and female. Both parts can be fitted in either direction of flow. Each side of the fitting has its own valve which closes off the relevant hose or pipe side. **ASK** is available with sensors for the purpose of electronic monitoring of filling. More than 100 different media can be connected without danger of a mix-up by equipping the fitting with a selector.

Areas of application:

The chemicals, pharmaceuticals, foodstuffs, petrol and mineral oil industries

Technical data / selection table

Nominal width	Nominal pressure alternative	Male / Female parts	- C - 1.4571	- CS - Hasteloy	- CP - 1.4404	- K - 1.4301 Brass	Connectors Thread: DIN, NPT BSP	Connectors Flange: DIN, ASA, DN 25 & larger	O rings PFE, EPDM, VITON etc.
DN 25	PN 16/25	/					G 1"	≥ DN 25	
DN 40	PN 16/25	/					G 1 1/2"	≥ DN 40	
DN 50	PN 16/25	/					G 2"	≥ DN 50	
DN 80	PN 16/25	/					G 3"	≥ DN 80	
DN 100	PN 16/25	/					G 4"	≥ DN 100	
DN 150	PN 16/25	/					-----	≥ DN 150	

The data reflects the current status of development.

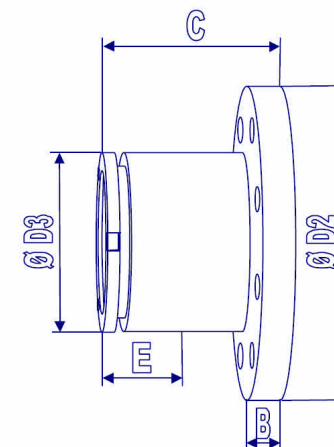
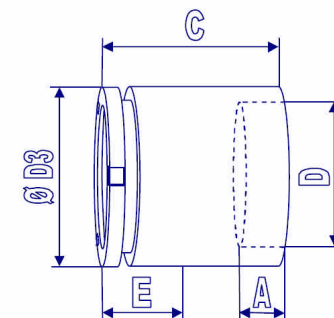
Subject to change.



Armaturen- und
Tankgerätebau GmbH & Co.KG

Postfach 1248 · D-65571 Diez a. d. Lahn · Germany
Tel.: 0049 - (0) 6432 / 914740 Internet: www.arta-gmbh.de
Fax: 0049 - (0) 6432 / 914712 e-mail: info@arta-gmbh.de

Type	Connection	PN (bar)	D	Ø D2 (mm)	A (mm)	B (mm)	C (mm)	E* (mm)	Ø D3 (mm)	Weight (Kg)
ASK-DN 15 male part	female thread	40	G½"	-	14	-	68	21	40	0,3
	flange DN 15	40	-	95	-	14	95	21	40	1,0
ASK-DN 25 male part	female thread	16	G1"	-	16	-	74	32	45	0,5
	flange DN 25	16	-	115	-	16	74	32	45	1,6
ASK-DN 32 male part	female thread	16	G1 ¼"	-	16	-	74	21	52	1,0
	flange DN 32	16	-	140	-	16	74	21	52	2,0
ASK-DN 40 male part	female thread	16	G1 ½"	-	14	-	85	34	69,5	1,8
	female thread	16	G2"	-	19	-	88	34	69,5	1,8
ASK-DN 50 male part	female thread	16	G2"	-	18	-	85	34	74	2,0
	flange DN 50	16	-	165	-	18	93	34	74	4,5
ASK-DN 80 male part	female thread	16	G3"	-	23	-	115	36	110	2,5
	flange DN 80	16	-	200	-	20	115	36	110	6,5
ASK-DN 100 male part	female thread	16	G4"	-	20	-	125	36	135	6,5
	flange DN 100	16	-	220	-	20	125	36	135	10,5
ASK-DN 125 male part	flange DN 125	16	-	250	-	22	171	50	199	14,2
ASK-DN 150 male part	flange DN 150	16	-	285	-	22	170	50	224	16,6

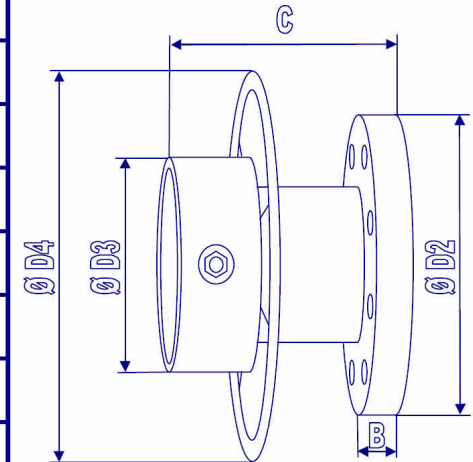
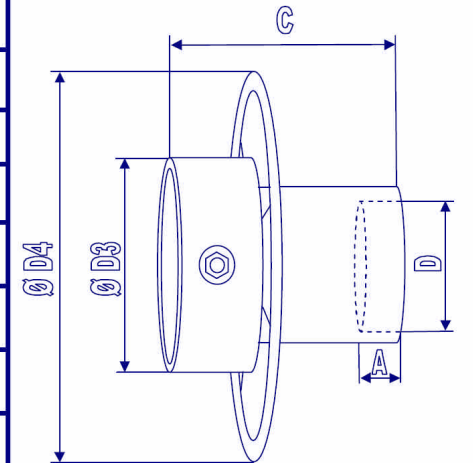


E*: for calculation of the total length for male and female part coupled = C (male part) + C (female part) – E (common length)
Standard types with BSP female thread acc. ISO 228 or with DIN flange. Other types i.e. male thread or NPT thread on request.

Subject to change

layout: M. Heublein	date: 06.01.2004	version: 7.0	replaces issue; from: 6.3 ; 31.07.2003	modified: M. Heublein
------------------------	---------------------	-----------------	---	--------------------------

Type	Connection	PN (bar)	D	Ø D2 (mm)	A (mm)	B (mm)	C (mm)	Ø D3 (mm)	Ø D4* (mm)	Weight (Kg)
ASK-DN 15 female part	female thread	40	G½"	-	14	-	98	50	60	0,8
	flange DN 15	40	-	95	-	14	113	50	60	1,5
ASK-DN 25 female part	female thread	16	G1"	-	16	-	109	55	84	1,1
	flange DN 25	16	-	115	-	16	109	55	84	2,7
ASK-DN 32 female part	female thread	16	G1 ¼"	-	16	-	119	62	91	2,2
	flange DN 32	16	-	140	-	16	119	62	91	3,2
ASK-DN 40 female part	female thread	16	G1 ½"	-	18	-	130	84	240	3,5
	female thread	16	G2"	-	18	-	130	84	240	3,5
ASK-DN 50 female part	female thread	16	G2"	-	18	-	130	85	240	3,5
	flange DN 50	16	-	165	-	18	130	85	240	5,0
ASK-DN 80 female part	female thread	16	G3"	-	23	-	160	124	280	7,5
	flange DN 80	16	-	200	-	20	160	124	280	11,5
ASK-DN 100 female part	female thread	16	G4"	-	22	-	168	150	370	11,5
	flange DN 100	16	-	220	-	20	168	150	370	16,5
ASK-DN 125 female part	flange DN 125	16	-	250	-	22	230	215	370	19,5
ASK-DN 150 female part	flange DN 150	16	-	285	-	22	225	240	524	26,4



Ø D4*: Standard types ASK-DN15, DN25 and DN32 with handle in PE (Polyethylen), as off DN40 with handwheel in stainless steel
Standard types with BSP female thread acc. ISO 228 or with DIN flange. Other types i.e. male thread or NPT thread on request.

Subject to change

layout: M. Heublein	date: 06.01.2004	version: 7.0	replaces issue; from: 6.3 ; 31.07.2003	modified: M. Heublein
------------------------	---------------------	-----------------	---	--------------------------

FULL - HOSE DRY COUPLING ASK

DN15 – DN150





GENERAL DESCRIPTION FULL HOSE DRY COUPLING ASK

1. Field of application

The ASK full-hose dry coupling allows hose pipes or pipelines which are filled or are under working pressure to be coupled and uncoupled quickly and in an environmentally friendly way without resulting in a loss of the material to be conveyed. The dry coupling can be mounted in suction and pressure lines of tank vehicles, tank containers and pumping stations.

2. Structure of the ASK

The coupling system comprises a female and a male half. The male half functions as a non-return valve and is chiefly mounted at fixed connection points (tank wagons, tanks etc.). The female half with its integrated rotary joint is coupled with the male half by means of a rotary motion and is usually mounted in a hose pipe or at a loading arm.

3. Function

The female half is fitted onto the crown of the male half and is coupled with the male half by rotating it. This rotary motion simultaneously opens the valve of the female half which in turn opens the valve of the male half.

4. Options

The ASK can be equipped with "selective" to prevent an incorrect filling action or to avoid mistakes.

The ASK can also be equipped with a sensory mechanism for electronic remote inquiries.

5. Materials

The following combinations of materials are used depending on the field of application and the medium to be conveyed:

General chemical area:	Housing / internal parts: 1.4571(316Ti) / Seals: PFE / PTFE
Acid/alkaline area:	Housing / internal parts: Hastelloy® / Seals: PFE / PTFE
Fuel/mineral oil area:	Housing: 1.4301(304) / Seals: Viton® (FPM)
	Housing: Brass / Seals: Viton® (FPM)

Other material specifications or sealing materials can be obtained on request.

6. Technical data

Sizes:	from DN15 – DN150
Nominal pressures:	PN10 for DN65 and DN125 versions PN16 for DN25 / DN32 / DN40 / DN80 / DN100 / and DN150 PN25 for DN25 / DN50 and DN80 versions PN40 for DN15 versions
Connections:	1" - 5" female threaded, flanges from DN15 – DN200

Other connection data is available on request.

Approvals: TÜV (= MOT)

Selective to prevent an incorrect filling action or to avoid mistakes

